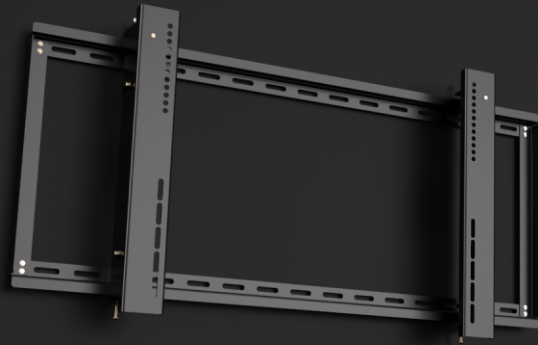




DESCRIPTION

nT07DA04 is a Heavy Duty fixed wall mount series for flat and curved display panels -with up and down 12 degree tilting function available in 4 ranges - nT07DA04A suitable for displays from 42" to 75"-max vesa 800x400 -weight capacity -50 Kgs . nT07DA04B suitable for displays from 55" to 86"-vesa 1000x600 -weight capacity -75 Kgs . nT07DA04C suitable for displays from 65" to 120"-vesa 1200x600 -weight capacity -120 Kgs . The mount is provided with tilting and height adjustment options . suitable for office , home , reception , digital signage , educationa and hospital applications .

nT07DA04 is made up of powder coated ms steel material . The mount has 12 degree up and 12 degree down tilting adjustment throught the bot provided on the arms Water level is provided on the mount to make the installation easy and faster. nT07DA04A supports displays from 42" to 75"-max vesa 800x400 -weight capacity -50 Kgs - it made up of xx mm ms steel . nT07DA04B supports displays from 55" to 86"-vesa 1000x600 -weight capacity -75 Kgs - it made up of xx mm ms steel .nT07DA04C supports displays from 65" to 120"-vesa 1200x600 -weight capacity -120 Kgs - it made up of xx mm ms steel . Available in Black Colour .



Specification

Material	:	Power coated ms steel
Display size	:	A-42-75"/B-55-86"/C-65-120"
Weight	:	A-50 Kgs/B-75 Kgs./C-120 Kgs
Vesa	:	A-200X200,200X400,300X300,400X400, 600X400/B-200X200,300X300,200X400, 400X400,600X400,800X400,800X600mm, 1000X400mm,1000X600mm,1200X600mm
Angle adjustments	:	12 deg up/12 deg down
Depth	:	A/B-mm,C/D-mm
Color	:	Black
Angle adjustment	:	8°



Webpage



Youtube



HEAVY DUTY ULTRA MOUNT

nT7DA04

